

PG16F139

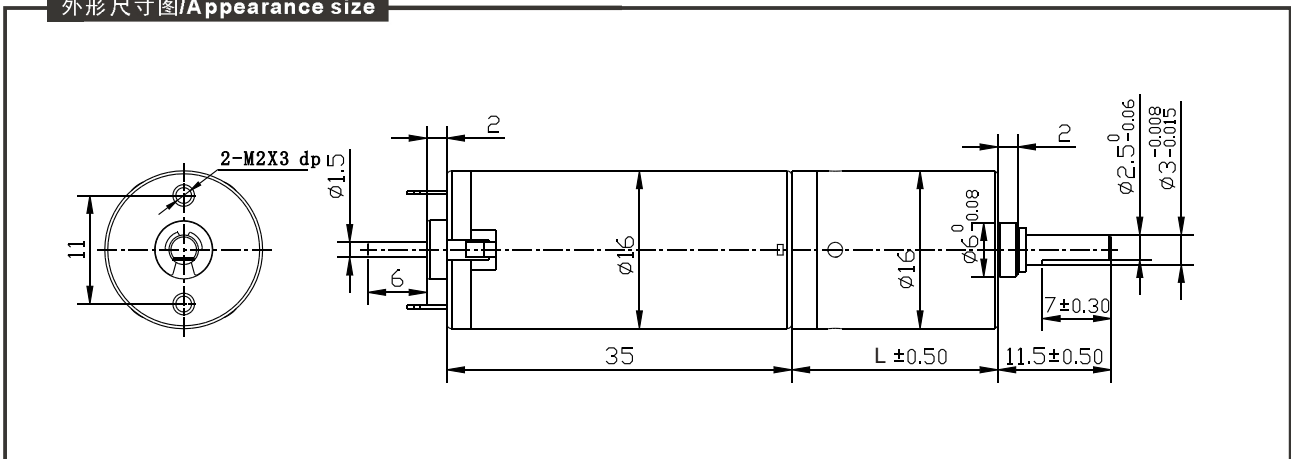
适用范围/Typical applications:

光学仪器、调焦照相机、指纹锁、自动节能器、水表IC卡、玩具礼品、办公设备、家用电器、自动执行器等等。

Optical equipment, Monitoring cameras, Kind of finger-electroni locks, Automatic energy saving bath, Water IC card, Toys and gifts, Office equipment, Household appliances, Automatic actuator.



外形尺寸图/Appearance size



齿轮箱清单/Gearbox data:

| 级数 Number of stages | 1 stages reduction | 2 stages reduction | 3 stages reduction | 4stages reduction | 5stages reduction |
|---------------------------------------|-----------------------|-----------------------|--------------------------|-----------------------------|---|
| 减速比 Reduction ratio | 4, 4.75 | 12.3, 16, 19, 22.5 | 42.8, 64, 76, 90, 107 | 150, 256, 304, 361, 428, | 712, 1024, 1216, 1444, 1715, 2036, 2418, |
| 齿轮箱长度 Gearbox length "L" mm | 13.7 | 17.3 | 20.9 | 24.5 | 28.1 |
| 齿轮最大额定力矩 Max. Gear Running torque | 1.0Kgf · cm | 1.5Kgf · cm | 4.0Kgf · cm | 4.0Kgf · cm | 4Kgf · cm |
| 齿轮最大损坏扭力 Max. Gear breaking torque | 3.0Kgf · cm | 4.5Kgf · cm | 12Kgf · cm | 12Kgf · cm | 12Kgf · cm |
| 效率Gearing efficiency | 90% | 81% | 73% | 65% | 59% |

马达清单Motor data:

| 马达型号 Motor name | 额定电压 Rated Volt. V | 空载No load | | 负载扭矩Load torque | | | | 堵转扭矩 Stall torque | |
|--------------------|--------------------------|-----------|-------|-----------------|-------|---------|--------------|-------------------|---------|
| | | Current | Speed | Current | Speed | Torque | Output power | Torque | Current |
| | | mA | r/min | mA | r/min | gf · cm | W | gf · cm | mA |
| F1391211000 | 12 | ≤55 | 11000 | ≤130 | 8000 | 20 | 1.6 | 108 | 910 |
| F1392411000 | 24 | ≤28 | 11000 | ≤270 | 8100 | 24 | 1.62 | 110 | 493 |

1、 减速后的输出力矩 = 马达力矩 × 减速比 × 齿轮效率。输出转速 = 马达转速 / 减速比。
 1、 After connecting motor and gearbox which is named gearmotor the output torque: motor torque X reduction ratio X gearing efficiency; output speed: motor speed / reduction ratio.

NOTE:

- 1、 马达命名: 如PG161391211000-90K。马达参数如马达清单上的F1391211000, 齿轮减速比参数如齿轮箱清单上的90, 马达的输出转速和输出力矩请参照上表的马达清单。
- 2、 马达可安装译码器。
- 3、 标准输出轴为 .0mm, 其它尺寸可根据客户要求制作。
- 4、 以上参数仅作参考, 具体以实物为准。
- 1、 Gearmotor named methods: e.g. PG161391211000-90K Motor please refer to the motor data F1391211000. Gearbox please refer to gearbox data reduction ratio 90. Related to gearmotor output speed and torque please refer to motor data.
- 2、 Motor can be installed with magnetic encoder.
- 3、 Standard output shaft after reducing: .0mm. other sizes of the output shaft can make as client request.
- 4、 Chart only for reference, products shall prevail the entity.